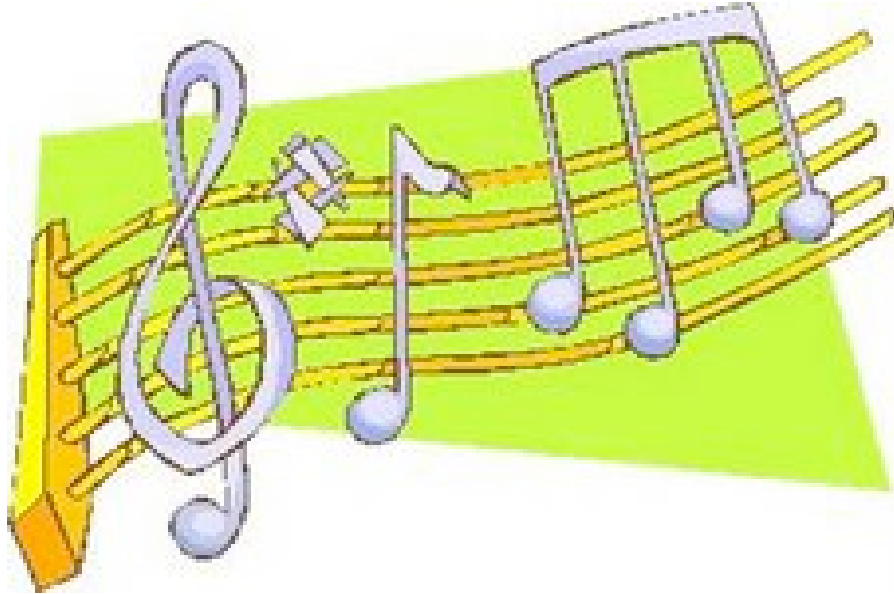


Holmes Bands

Symphonic Band
2008 - 2009

H A N D B O O K



Mr. Jeremy Budrow
Director

hmsbands.org

A guide for the Symphonic Band at Holmes Middle School.

HOLMES MIDDLE SCHOOL SYMPHONIC BAND HANDBOOK

INTRODUCTION, GOALS, AND PHILOSOPHY

The Holmes Middle School band program is an active program dedicated to giving students the opportunity to grow musically, socially, and academically. Through musical performance, students learn how to perform and appreciate music of a variety of styles and levels of difficulty. Through group involvement students learn how to work together to achieve common goals and develop group discipline and respect for fellow students. Students learn to focus on goals and achievements that are more than personal as well as develop self-discipline. Through study of harmony, scales, rhythms, etc., students develop skills that will allow them to truly understand and appreciate the foundation of music as well as the aesthetics.

Our desire to have a successful musical experience for each student requires that both the student and parent thoroughly understand the department's purpose, goals, and the framework in which these goals will be attained. Music is a discipline and an area of knowledge important in itself. Our purpose is to develop this musical knowledge, which will lead to a natural form of self-expression through participation in the band and performance on a musical instrument.

Students play a variety of music from classical to jazz and popular literature. Emphasis is placed on the development of fundamental skills related to posture, breathing, embouchure, fingerings, counting, music reading, and overall tone production. Through scales, rhythmic exercises, and etudes, students will develop the skills needed to perform band literature designed for the middle school band. *Daily practice is a must and private instruction is strongly recommended.*

SYMPHONIC BAND UNIFORM

In order for our bands to look as good as they sound, we require the students to wear a specified uniform for all performances. With help from parents, we can ensure that all students are properly dressed.

Boys

- White, long-sleeved, shirt
 - No logos or pictures
 - Tucked in
- Black pants
- Black shoes
- Black socks
- Ties for all gentlemen

Girls

- White blouse or shirt
 - No logos or pictures
- Black pants
- Black shoes
- Black socks

ABSOLUTELY NO STUDENTS MAY WEAR GYM SHOES, JEANS OR WHITE SOCKS!

**STUDENTS WHO DO NOT WEAR THE REQUIRED UNIFORM
MAY BE ASKED NOT TO PARTICIPATE IN THE CONCERT.**

CONCERT DATES

The HMS Symphonic Band performs at Holmes three times a year. Attendance to all concerts is mandatory for all band students. All students should be in the appropriate attire for all concerts (see above). Concerts are a time when all students are able to demonstrate their hard work and effort to parents, family and friends. All HMS Band concerts are free and open to the public. All HMS Band concerts will begin at 7:00pm. The following are the dates for the HMS Symphonic Band performances for the 2008-2009 School Year:

- **Tuesday, December 9th 2008,**
- **Wednesday, February 25th 2009**
- **Wednesday, May 20th 2009**

ABOUT SYMPHONIC BAND

The Holmes Symphonic Band is composed of seventh and eighth grade students who have demonstrated a very high level of dedication to instrumental music and have achieved a level of accomplishment on their instrument that exceeds the average middle school musician. Students in the Symphonic Band are expected to demonstrate the highest level of dedication and commitment to the band program. They are expected to be exemplary role models to the younger and less accomplished students.

Symphonic Band meets on Tuesday and Thursday at 7:30am and on Monday and Wednesday during the school day. All 'in school' rehearsals will take place during 9th Period (2:50pm-3:30pm). All rehearsals for Symphonic Band will take place in the Band Room.

All Symphonic Band members will also be a part of a weekly lesson group (see below for more details).

Symphonic Band will perform three concerts at Holmes through out the year. In addition Symphonic Band will also perform at the Illinois Grade School Music Association's Annual Contest (see below for more details).

ABOUT THE EARLY MORNING REHEARSALS

Early morning rehearsals (7:30am) are an extremely important part of the Holmes Bands. All groups have early morning rehearsals. Early morning rehearsals will be on Tuesdays and Thursdays, in the band room, throughout the year. Attendance to all early morning rehearsals is mandatory.

For early morning rehearsals all students must wait in the HMS main lobby until Mr. Budrow comes down and brings them to the band room. Any student arriving later than 7:30am should go through the main gym directly to the band room. Rehearsals are only as productive as we make them. Being on time and ready to start at 7:30am helps to make the most effective use of everyone's time.

ABOUT THE WEEKLY LESSONS

All students receive one weekly, small-group lesson, which meets *during* the school day. Students are excused for academic classes for their lessons, however they are responsible for all the work from their class. Lessons rotate throughout the day from week to week to insure that the students do not miss the same class more than twice during each grading period.

Students are REQUIRED to attend all lessons. The classroom teachers will notify Mr. Budrow if a specific student needs to remain in his or her class. The student will then be asked to make up his or her lesson at another time, recommended by Mr. Budrow. If no times are available for a make-up lesson, Mr. Budrow may assign an alternative assignment to receive credit for the lesson.

A student who forgets to come to his or her lesson or does not have his or her instrument will be marked as having an “unexcused” absence. If the student is not in school, he or she will be marked as “excused,” but will still have to make up the credit for the lesson, as determined by Mr. Budrow.

After every concert, students will receive a new copy of the lesson schedule, which will list exactly when and where the students will have their weekly lessons. It will also display other important information regarding reminders for parents. These schedules are also posted in each of the classrooms as well as directly outside the lesson rooms in the elementary schools.

BELOW IS AN EXAMPLE OF WHAT THE LESSON SCHEDULE LOOKS LIKE:

BAND LESSONS AT WHITMAN ELEMENTA

<i>LEAVE CLASS AT:</i>	9:25	9:55	10:25	10:55	11:25	12:55
LESSON STARTS:	9:30	10:00	10:30	11:00	11:30	1:00
9/4 - TUE	A	B	C	D	E	F
9/10 - MON	F	A	B	C	D	E
9/17 - MON	E	F	A	B	C	D
9/24 - MON	D	E	F	A	B	C

“PRACTICE, PRACTICE, PRACTICE”

Practice is very important in order to achieve greatness at anything, and Band is exactly the same way! If you want to get better at something, you have to practice it. Throughout the year, students will receive different exercises and scales, in addition to their band music, that they will need to practice consistently. Students are encouraged to practice every day for at least thirty minutes. Students will be asked to play new material at each lesson and only with consistent practice will they be able to achieve this goal.

REQUIRED MATERIALS

The majority of materials that students will need for their first year in band have been acquired at the Band Registration Night earlier this year. Those items are as follows:

- Essential Elements 2000 Book 2 (for your instrument) all 7th Graders
- Accent on Achievement Book 2 (for your instrument) all 8th Graders
- Instrument-Specific Materials, such as reeds, cork grease, valve oil, instrument cleaning swabs, etc. will be given at the Registration Night, but are items that will need to be replaced throughout the year because of use by the student.
 - If your student needs new materials, please download a “Supply Order Form” from the FORMS page of the Holmes Band Website.

SCHOOL INSTRUMENT USE

Instruments provided by the school for student use require a certain level of maintenance and care. All students who use these school-provided instruments will be required to pay a fee, as determined Mr. Budrow, before they can take the instrument home. This fee will cover the basic maintenance the instrument will need throughout the year. Students will be responsible for acquiring their own materials, such as books, reeds, etc. Students renting instruments from HMS will receive a written contract.

TESTS AND QUIZZES

Many weeks, in the student’s weekly lesson, the student will have a quiz over certain exercises or songs that they have been asked to learn. Before each concert, the students will have a playing test, during which they will have to play their songs they have prepared for the upcoming concert.

AUDITIONS AND CHAIR PLACEMENT

In all professional musical ensembles a ranking order for the musicians is applied by what chair the musician sits in. To reflect a professional atmosphere the HMS Symphonic Band emulates this style of seated rank order. The first chair placement auditions will take place the week of September 15th. All others will take place two weeks after every concert. These auditions will be held in the form of a playing test as described above.

GRADES

Grades will be based on individual achievement by Mr. Budrow. **HMS Band grades are a part of the school report card.** They will be assigned as follows:

Class Participation 50%
(Having a pencil, all books, and attendance at rehearsals and performances)

Tests / Assignments 50%
(Theory assignments, playing tests, scale tests, etc.)

Students may receive EXTRA CREDIT by attending concerts, musicals, or other performances throughout the year. To receive extra credit, students must hand in a program from the performance.

Students may also receive EXTRA CREDIT by volunteering throughout the year, doing various tasks such as organizing music, helping out at 5th grade band early morning rehearsals, etc. Opportunities are available through Mr. Budrow.

DROP POLICY

Occasionally, students may realize that they do not wish to continue playing with the group or find the extra demand on their time more than they had anticipated. Students are allowed to drop band only during the specified drop period each trimester. The official drop periods for the 2008 – 2009 school year are as follows:

1st Trimester: August 26 - September 2

2nd Trimester: November 25 - December 5

3rd Trimester: March 9 - March 13

To drop band, students must obtain a drop request form from Mr. Itzkowitz and collect the required signatures. Hand written notes are NOT acceptable. Students must attend band until all the proper approvals have been obtained and all the required paperwork has been completed.

IGSMA CONTEST

Every year the HMS Symphonic Band attends and participates in the Illinois Grade School Music Associations annual symphonic band contest. This performance provides all students with an opportunity to hear and see what other musical groups made up of seventh and eighth graders are able to do. This also gives our ensemble an opportunity to be critiqued by a panel of professional band directors and musicians to help encourage us and grow to the best possible musical potential. All students are required to participate in our contest experience. In addition to all rehearsals previously mentioned there will be at least one special contest rehearsal that will also be required.

The date of the 2008-2009 IGSMA Contest is Friday March 13th 2009.

COMMUNICATION

Communication with parents is extremely important to Mr. Itzkowitz and Mr. Budrow. We would like to get to know each parent and would like for parents to feel comfortable enough with us that you call, write, or e-mail us with concerns or questions. The following are ways in which we may be contacted:

Holmes Band Office: (847) 520-2821 voice mailbox #2

Mr. Jeremy Budrow: jbudrow@ccsd21.org

Each week, we send out an electronic newsletter with up-to-date calendars and other various information that parents and students need to know. We encourage all students and parents to sign up for this newsletter by going to our website, **<http://www.hmsbands.org>**, and clicking on the link at the top of the page.

If you would like to schedule an appointment with either Mr. Budrow, please contact him using the above contact information.